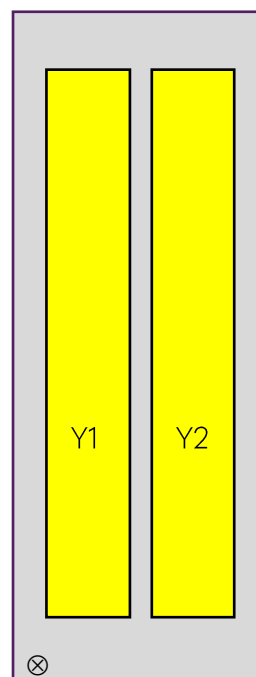
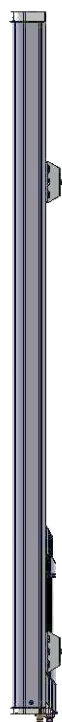


12011x

CMA-UBDHH/6520/E2-10

4-port antenna	Unit	Y1	Y2
Frequency range	MHz	1710 - 2690	1710 - 2690
Polarization		x	x
HBW	°	65	65
Gain	dBi	20	20
EDT range	°	2 - 10	2 - 10



Product architecture

Rural coverage:

Maximizes high-band coverage and achieves better load-balancing, cell-coverage, throughput, indoor coverage and subscriber satisfaction. Especially relevant when upgrading existing sites with new frequencies.

High capacity:

Increases CINR and maximizes spectrum efficiency (b/s/Hz), improving network throughput. Allows addition of more subscribers and maximizes the value of the investment in network and spectrum.

Indoor penetration/urban coverage:

Significantly improves indoor coverage in both rural and urban environments by upgrading the quality of the "last mile". This allows all users to enjoy all spectrum and secure high-band coverage, even deep indoors.

12011x

CMA-UBDHH/6520/E2-10

Electrical Parameters Y1 and Y2:

Parameter (Radiation)					
Frequency band	MHz	1710 - 1880	1920 - 2170	2300 - 2400	2490 - 2690
Gain	dBi	18.3	18.8	19.4	20.2
Azimuth Parameters					
Azimuth (3dB) Beam Width	°	67	62	60	56
Azimuth Beam Squint**	°	2.8	3.0	3.0	1.7
Front to Back Ratio (total power)	dB	28	30	32	33
Cross-Polar Discrimination (0°)	dB	30	34	35	32
Sector Power Ratio	%	6.2	5.4	3.7	2.8
Elevation Parameters					
Elevation (3 dB) Beam Width	°	6.7	5.8	5.0	4.6
Electrical Downtilt Range	°	2 - 10	2 - 10	2 - 10	2 - 10
First upper Sidelobe suppression	dB	17	20	16	20
First Nullfill Below Horizon	dB	-17	-15	-15	-13

Parameter (ports)					
Frequency band	MHz	1710 - 1880	1920 - 2170	2300 - 2400	2490 - 2690
Impedance	Ω	50			
VSWR/Return Loss	_/dB	1.5:1 / 14			
Intra Array Isolation	dB	28	28	28	28
Inter Array Isolation	dB	28	28	28	28
Passive Intermodulation @ 2x43 dBm CW	dBc	<-155			
Maximum Input Power per port	W	500			
Antenna Insertion Loss	dB	0.37	0.43	0.47	0.39

Mechanical parameters:

Mechanical specification:	
Connectors	4 x 4.3 -10 female
Connector position	Bottom
Lightning protection	DC grounded
Height mm (inch)	1385 (54.5)
Width mm (inch)	291 (11.5)
Depth mm (inch)	135 (5.3)
Antenna weight kg (lb)	14 (31)
Wind load at 42 m/s (94 mph)	
Frontal N (lbf)	363 (82)
Lateral N (lbf)	80 (18)
Survival wind speed m/s (mph)	67 (150)
EPA m ² (inch ²)	
Colour radome	Light Grey, RAL 7035
Radome material	ASA
Mounting hardware:	
Mounting bracket	2
Bracket weight (complete) kg (lb)	5 (11)
Pole diameter mm (inch)	45 (1.8) - 120 (4.7)
Mechanical tilt range °	0 - 8

Packing data	
Box size mm (inch)	166 x 31 x 19 (65.4 x 12.2 x 7.5)
Box weight kg (lb)	22 (48.5)
Maximum number of boxes per pallet	21

Ordering information:

Product number	Product description
120110	CMA-UBDHH/6520/E2-10/MET including standard tilt mount
120115	CMA-UBDHH/6520/E2-10/RET including standard tilt mount

RET info

The RET actuator is AISG compatible and signals Single-Antenna RET Device type 0x01 (hex) in AISG protocol layer 2 as described in 3GPP TS25.462 (a.k.a. TYPE 1).

One RET actuator per antenna column, with individual AISG connectors in and out.

Type CMA-RET-02

RET spare part order number: 110086.