

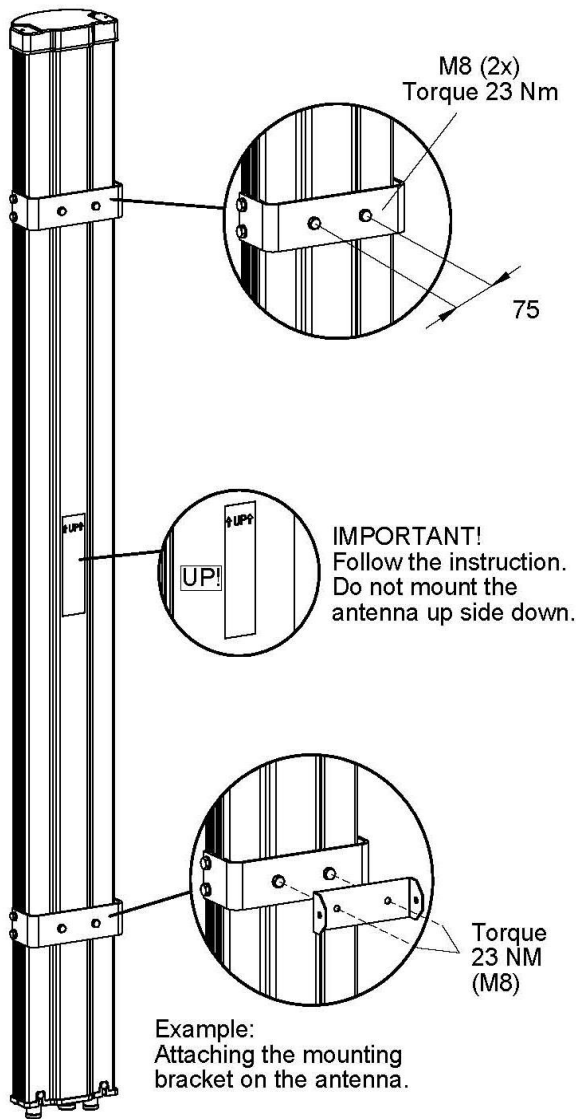
MOUNTING INSTRUCTION

Mount interface

Antenna No.	110050B	110032B	110045B
Antenna description	CMA-B/6521/E0-6	CMA-B/6520/E0-8	CMA-B/6519/E0-8
Tilt bracket	110096	110096	110101
Weight	16 kg	13 kg	10 kg
Length	2060 mm	1641 mm	1298 mm
With	196 mm	196 mm	196 mm
Depth	122 mm	122 mm	122 mm

All dimensions are in millimeters

©Cellmax Technologies AB 2012. IM-CA203218 rev. E.



Premounted position for CMA-B/6521/E0-6
and CMA-B/6520/E0-8

