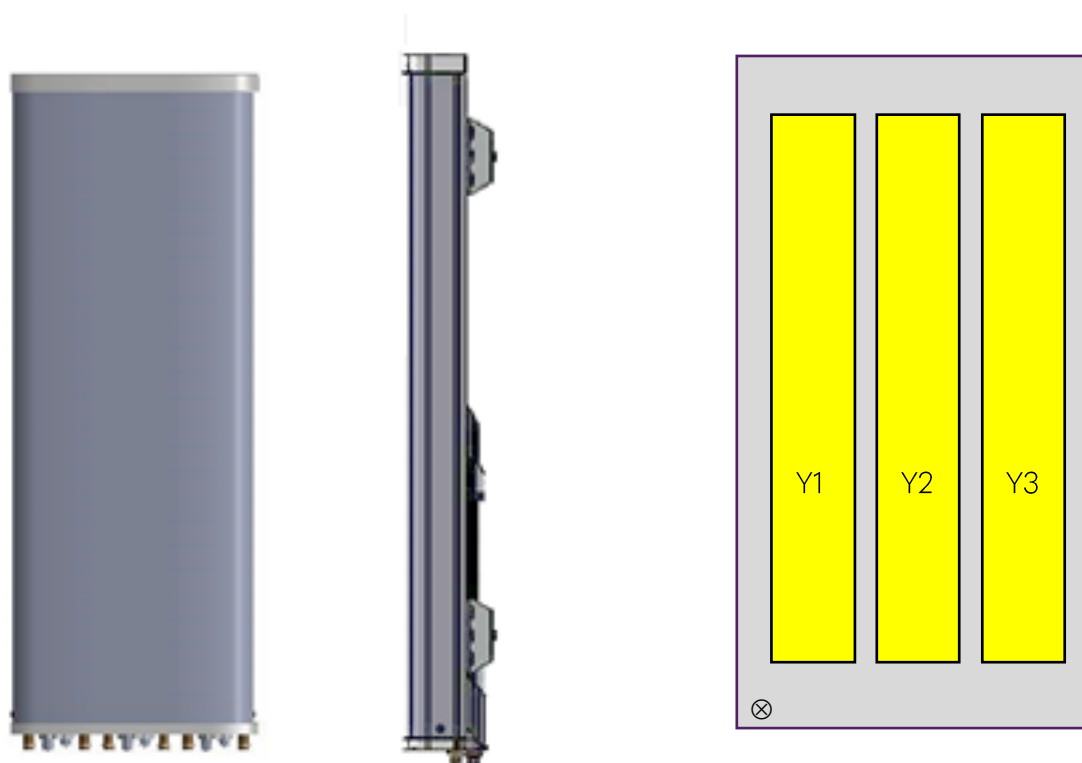


12014x

CMA-UBDHHH/6518/E2-10

6-port antenna	Unit	Y1	Y2	Y3
Frequency range	MHz	1695 - 2690	1695 - 2690	1695 - 2690
Polarization		x	x	x
HBW	°	65	65	65
Gain	dBi	18.5	18.5	18.5
EDT range	°	2 - 10	2 - 10	2 - 10



Product architecture

Indoor penetration/urban coverage:

By offering a crucial improvement in the quality of the "last mile" in both rural and urban environments, these antennas significantly improve indoor coverage. This allows all users to enjoy all spectrums and secure high-band coverage, even deep indoors.

12014x

CMA-UBDHHH/6518/E2-10

Electrical Parameters Y1, Y2 and Y3:

Parameter (Radiation)					
Frequency band	MHz	1710 - 1880	1920 - 2170	2300 - 2400	2490 - 2690
Gain	dBi	16.6	17.3	17.8	18.5
Azimuth Parameters					
Azimuth (3dB) Beam Width	°	65	62	61	58
Azimuth Beam Squint**	°	3.2	3.0	1.9	1.4
Front to Back Ratio (total power)	dB	31	33	32	31
Cross-Polar Discrimination (0°)	dB	30	31	35	33
Sector Power Ratio	%	6.3	5.7	3.8	3.3
Elevation Parameters					
Elevation (3 dB) Beam Width	°	10	8.8	7.7	6.9
Electrical Downtilt Range	°	2 – 10	2 – 10	2 – 10	2 – 10
First upper Sidelobe suppression	dB	17	21	19	22
First Nullfill Below Horizon	dB	-	-	-	-

Parameter (ports)					
Frequency band	MHz	1710 - 1880	1920 - 2170	2300 - 2400	2490 - 2690
Impedance	Ω	50			
VSWR/Return Loss	_/dB	1.5:1 / 14			
Intra Array Isolation	dB	28	28	28	28
Inter Array Isolation	dB	28	28	28	28
Passive Intermodulation @ 2x43 dBm CW	dBc	<-155			
Maximum Input Power per port	W	500			
Antenna Insertion Loss	dB	0.27	0.30	0.41	0.33

Mechanical parameters:

Mechanical specification:	
Connectors	6 x 4.3 -10 female
Connector position	Bottom
Lightning protection	DC grounded
Height mm (inch)	929 (36.6)
Width mm (inch)	417 (16.4)
Depth mm (inch)	135 (5.3)
Antenna weight kg (lb)	14 (31)
Wind load at 42 m/s (94 mph)	
Frontal N (lbf)	349 (78)
Lateral N (lbf)	58 (13)
Survival wind speed m/s (mph)	67 (150)
EPA m ² (inch ²)	
Colour radome	Light Grey, RAL 7035
Radome material	ASA
Mounting hardware:	
Mounting bracket	2
Bracket weight (complete) kg (lb)	5 (11)
Pole diameter mm (inch)	45 (1.8) - 120 (4.7)
Mechanical tilt range °	0 - 10

Packing data	
Box size mm (inch)	1660 x 440 x 190 (65.4 x 17.3 x 7.5)
Box weight kg (lb)	23 (50.7)
Maximum number of boxes per pallet	14

Ordering information:

Product number	Product description
120140	CMA-UBDHHH/6518/E2-10/MET including standard tilt mount
120145	CMA-UBDHHH/6518/E2-10/RET including standard tilt mount

RET info

The RET actuator is AISG compatible and signals Single-Antenna RET Device type 0x01 (hex) in AISG protocol layer 2 as described in 3GPP TS25.462 (a.k.a. TYPE 1).

One RET actuator per antenna column, with individual AISG connectors in and out.

Type CMA-RET-02

RET spare part order number: 110086.