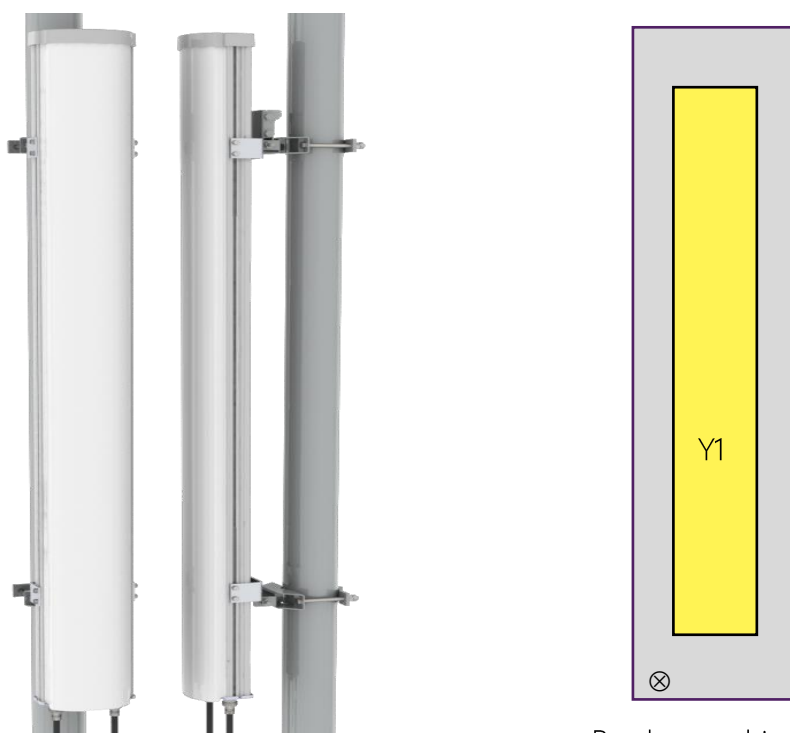


2-port antenna	Unit	Y1
Frequency range	MHz	2300 - 2690
Polarization		x
HBW	°	65
Gain	dBi	21
EDT range	°	0 - 6



Product architecture

High capacity:

Increases CINR and maximizes spectrum efficiency (b/s/Hz), improving network throughput. Allows addition of more subscribers and maximizes the value of the investment in network and spectrum.

Road coverage:

Achieves virtually seamless cell-edge coverage, reduces dropped calls for people on the move and increases overall subscriber satisfaction.

Indoor penetration/urban coverage:

Significantly improves indoor coverage in both rural and urban environments by upgrading the quality of the "last mile". This allows all users to enjoy all spectrum and secure high-band coverage, even deep indoors.

11022x

CMA-L/6521/E0-6

Electrical Parameters B1 and B2:

Parameter (Radiation)				
Frequency band	MHz	2300 - 2400	2400 - 2496	2496 - 2690
Gain	dBi	20.1	20.4	21.0
Azimuth Parameters				
Azimuth (3dB) Beam Width	°	65	64	62
Azimuth Beam Squint**	°			
Front to Back Ratio (total power)	dB	>25	>25	>25
Cross-Polar Discrimination (0°)	dB	>20	>20	>20
Sector Power Ratio	%	5	5	5
Elevation Parameters				
Elevation (3 dB) Beam Width	°	4.3	4.1	3.9
Electrical Downtilt Range	°	0 – 6	0 – 6	0 – 6
First upper Sidelobe suppression	dB	>18	>18	>18
First Nullfill Below Horizon	dB	-20	-20	-20

Parameter (ports)				
Frequency band	MHz	1710 - 1880	1850 - 1990	1920 - 2180
Impedance	Ω	50		
VSWR/Return Loss	_/dB	<1.5:1 / 14		
Intra Array Isolation	dB	30	30	30
Inter Array Isolation	dB	30	30	30
Passive Intermodulation @ 2x43 dBm CW	dBc	<-153		
Maximum Input Power per port	W	500		
Antenna Insertion Loss	dB	0.25	0.25	0.25

Mechanical parameters:

Mechanical specification:	
Connectors	2 x 7/16 female
Connector position	Bottom
Lightning protection	DC grounded
Height mm (inch)	1641 (64.6)
Width mm (inch)	196 (7.7)
Depth mm (inch)	122 (.8)
Antenna weight kg (lb)	13 (29)
Wind load at 42 m/s (94 mph)	
Frontal N (lbf)	307 (69)
Lateral N (lbf)	110 (25)
Survival wind speed m/s (mph)	67 (150)
EPA m ² (inch ²)	
Colour radome	Light Grey, RAL 7035
Radome material	ASA
Mounting hardware:	
Mounting bracket	2
Bracket weight (complete) kg (lb)	5.2 (11.5)
Pole diameter mm (inch)	45 (1.8) - 120 (4.7)
Mechanical tilt range °	0 - 5

Packing data	
Box size mm (inch)	180 x 26 x 24 (70.9 x 10.2 x 9.5)
Box weight kg (lb)	21 (46.3)
Maximum number of boxes per pallet	24

Ordering information:

Product number	Product description
1100215	CMA-L/6521/E0-6/MET including standard tilt mount
1100220	CMA-L/6521/E0-6/RET including standard tilt mount

RET info

The RET actuator is AISG compatible and signals Single-Antenna RET Device type 0x01 (hex) in AISG protocol layer 2 as described in 3GPP TS25.462 (a.k.a. TYPE 1).

One RET actuator per antenna column, with individual AISG connectors in and out.

Type CMA-RET-02

RET spare part order number: 110086.