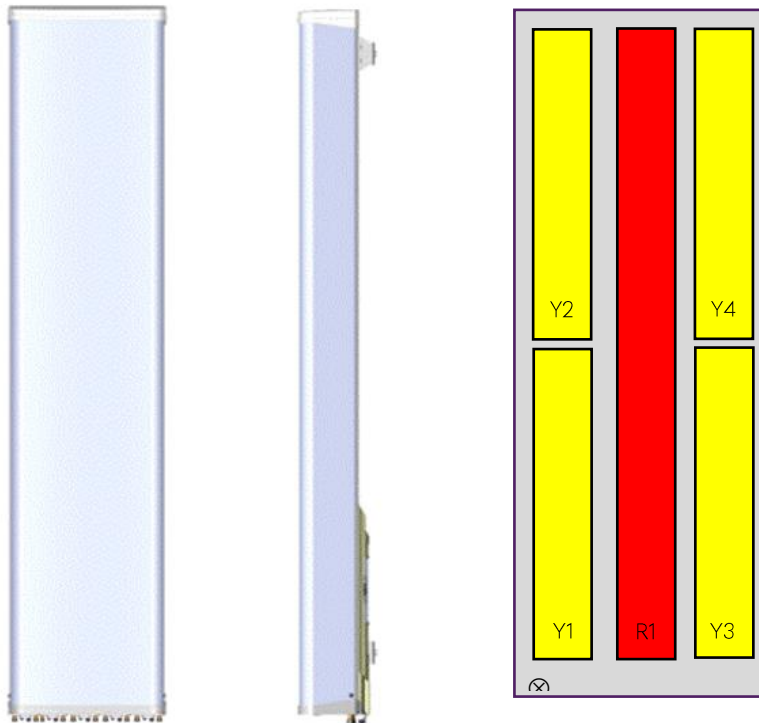


12061x

CMA-UBTLBHHHH/6516/19/19/19/19

10-port antenna	Unit	R1	Y1	Y2	Y3	Y4
Frequency range	MHz	698 - 960	1695 - 2690	1695 - 2690	1695 - 2690	1695 - 2690
Polarization		x	x	x	x	x
HBW	°	65	65	65	65	65
Gain	dBi	16	19	19	19	19
EDT range	°	2 - 12	2 - 10	2 - 10	2 - 10	2 - 10



Product architecture

The CellMax multiband antennas extend the line of the ultra-wide band antennas, combining wide band frequency range in the mid band with wide band in the low band, still featuring exceptionally low insertion loss in a compact package.

The design aims at low differences between the ports in terms of gain (per band), azimuth and elevation patterns, and a very good electrical tilt precision, allowing the network to generate highest possible cell throughput, capacity, and coverage.

12061x

CMA-UBTLBHHHH/6516/19/19/19/19

Electrical Parameters R1

Parameter (Radiation)			
Frequency band	MHz	698 - 798	824 - 960
Gain	dBi	15.5	16.2
Azimuth Parameters			
Azimuth (3dB) Beam Width	°	68	70
Azimuth Beam Squint	°	3	4
Front to Back Ratio (total power)	dB	>26	>25
Cross-Polar Discrimination (0°)	dB	>20	>20
Sector Power Ratio	%	6	7
Elevation Parameters			
Elevation (3 dB) Beam Width	°	12.4	11.2
Electrical Downtilt Range	°	2 - 12	2 - 12
First upper Sidelobe suppression	dB	16	16

Parameter (ports)		
Frequency band	MHz	698 - 960
Impedance	Ω	50
VSWR/Return Loss	_/dB	1.5 / 14
Intra Array Isolation	dB	28
Inter Array Isolation	dB	28
Passive Intermodulation @ 2x43 dBm CW	dBc	-155
Maximum input Power per port	W	500
Antenna Insertion Loss	dB	0.4

12061x

CMA-UBTLBHHHH/6516/19/19/19/19

Electrical Parameters Y1,Y2,Y3 & Y4:

Parameter (Radiation)					
Frequency band	MHz	1695 - 1880	1850 - 1990	1920 - 2170	2490 - 2690
Gain	dBi	16.7	17.5	18.4	18.8
Azimuth Parameters					
Azimuth (3dB) Beam Width	°	66	62	60	55
Azimuth Beam Squint	°	2	3	3	2
Front to Back Ratio (total power)	dB	>26	>27	>27	>27
Cross-Polar Discrimination (0°)	dB	>20	>20	>20	>20
Sector Power Ratio	%	5	5	4	3
Elevation Parameters					
Elevation (3 dB) Beam Width	°	9.8	8.8	7.6	6.8
Electrical Downtilt Range	°	2 – 10	2 – 10	2 – 10	2 – 10
First upper Sidelobe suppression	dB	17	21	18	22

Parameter (ports)					
Frequency band	MHz	1695 - 1880	1850 - 1990	1920 - 2170	2490 - 2690
Impedance	Ω	50			
VSWR/Return Loss	_/dB	1.5 / 14			
Intra Array Isolation	dB	28	28	28	28
Inter Array Isolation	dB	28	28	28	28
Passive Intermodulation @ 2x43 dBm CW	dBc	-155			
Maximum Input Power per port	W	500			
Antenna Insertion Loss	dB	0.3	0.4	0.4	0.3

12061x

CMA-UBTLBH HHH/6516/19/19/19/19

Mechanical parameters:

Mechanical specification:	
Connectors	10 x 4.3 -10 female
Connector position	Bottom
Lightning protection	DC grounded
Height mm (inch)	1906 (75)
Width mm (inch)	409 (16)
Depth mm (inch)	225 (9)
Antenna weight kg (lb)	33 (73)
Wind load at 42 m/s (94 mph)	
Frontal N (lbf)	826 (186)
Lateral N (lbf)	493 (111)
Survival wind speed m/s (mph)	67 (150)
Colour radome	Light Grey, RAL 7035
Radome material	ASA
Mounting hardware:	
Mounting bracket	2
Bracket weight (complete) kg (lb)	3 (7)
Pole diameter mm (inch)	45 (2) - 120 (5)
Mechanical tilt range °	0 - 5

Packing data	
Box size mm (inch)	2580x450x315 (102x18x12)
Box weight kg (lb)	8 (21)
Maximum number of boxes per pallet	8

RET info

The RET actuator is AISG compatible and signals Single-Antenna RET Device type 0x01 (hex) in AISG protocol layer 2 as described in 3GPP TS25.462 (a.k.a. TYPE 1).

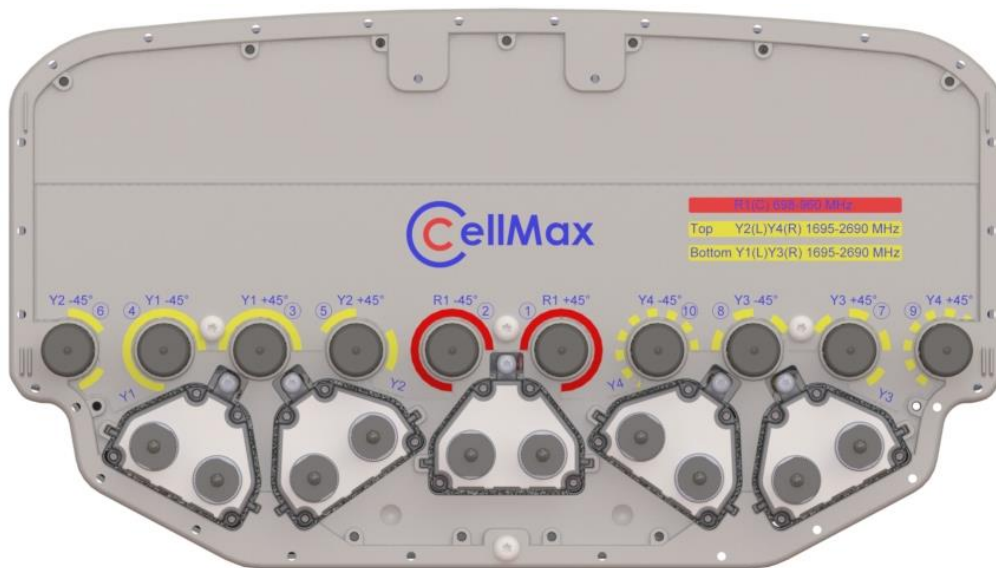
One RET actuator per antenna column, with individual AISG connectors in and out.

Type CMA-RET-02

RET spare part order number: 110086.

Ordering information:

Product number	Product description
120615	CMA-UBTLBH HHH/6516/19/19/19/19/RET including standard tilt mount



Bottom view